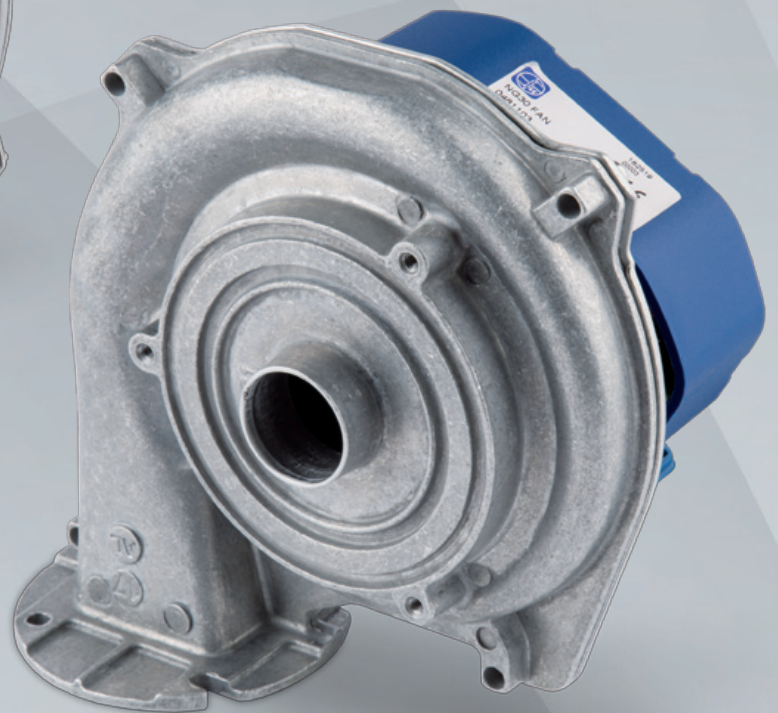
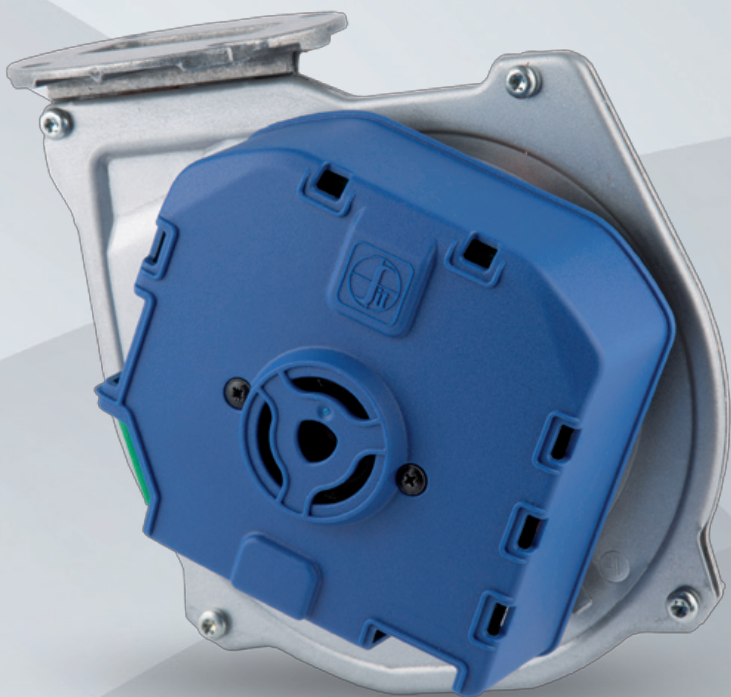




# NG30

Fan with brushless motor  
for gas appliances  
using premix burner



## SIT

Viale dell'Industria, 31-33

35129 Padova - ITALY

Tel. +39 049 82 93 111

Fax +39 049 80 70 093

[www.sitgroup.it](http://www.sitgroup.it)

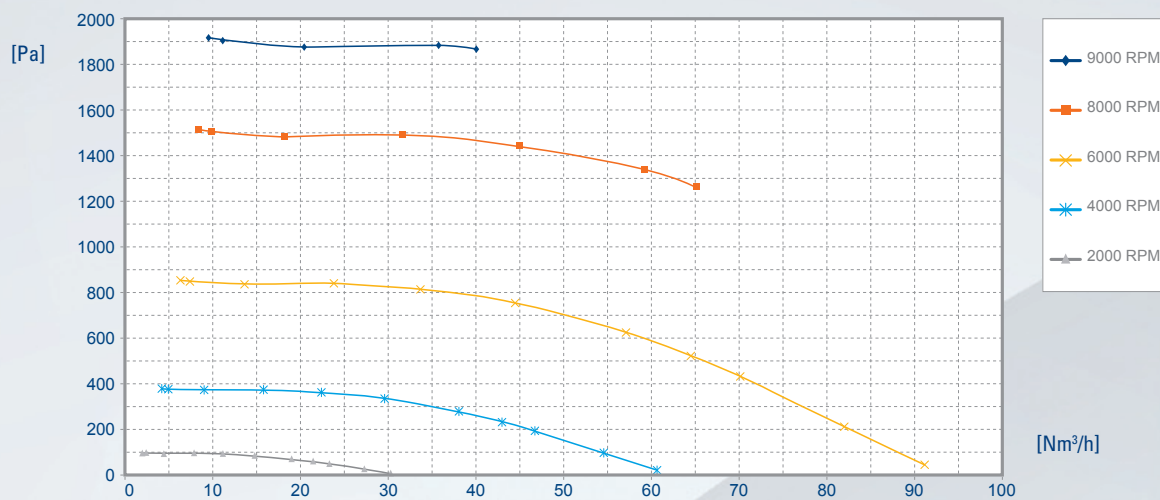
[marketing@sitgroup.it](mailto:marketing@sitgroup.it)

## Fan with brushless motor for gas appliances using premix burner

- New patented solutions for motor and body design
- Available in different versions of supply voltage or electronic motor driver integration
- Compatible with the Mixers of NG40
- Available interface for 898 Sigma (integration of 848 Sigma and Mixer)
- Various sizes of venturi are available to fit the appliance maximum power
- Different venturi orientations are possible

### Main Technical data

AIR FLOW / PRESSURE @ 80% duty cycle



<b>Voltage</b>	230 Vac, 120 Vac, 325 Vdc, 24 Vdc
<b>Frequency</b>	50Hz - 60Hz
<b>Nominal power consumption</b>	65 W
<b>Electronic Motor Driver</b>	Integrated or remote
<b>Maximum air flow</b>	100 m³/h
<b>Maximum pressure</b>	2800 Pa
<b>Impeller speed range</b>	9000 to 800 RPM
<b>Motor wire insulation class</b>	H
<b>Protection class</b>	I
<b>Installation position</b>	Any
<b>Ambient temperature range</b>	-10 to +70°C
<b>Impeller material</b>	Antistatic plastic



NG30 M21



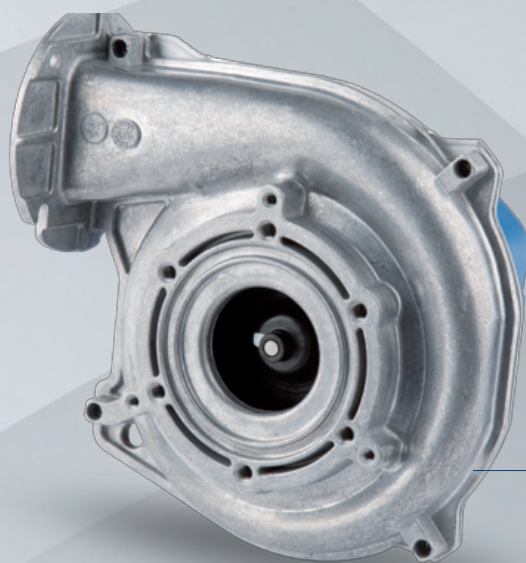
NG30 for 898 SIGMA



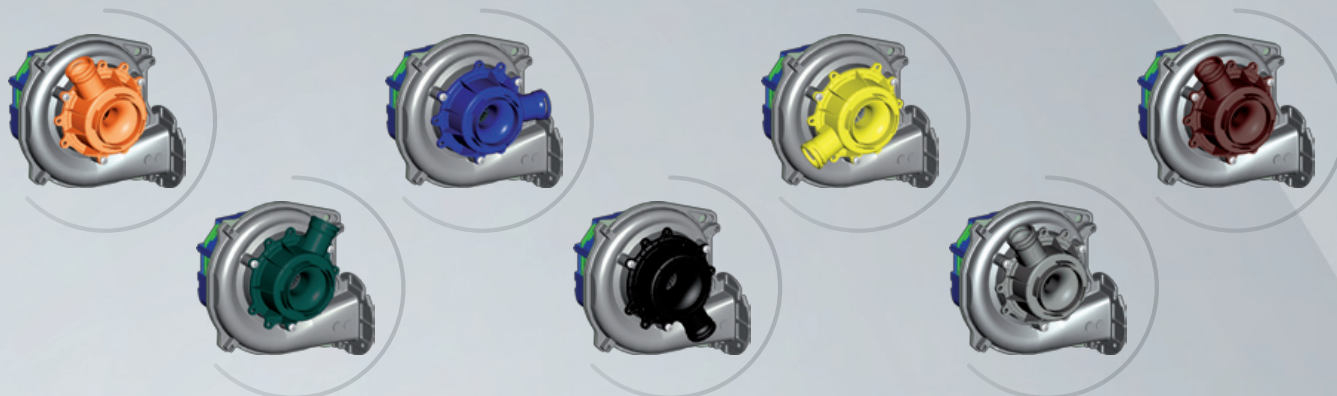
NG30 M28



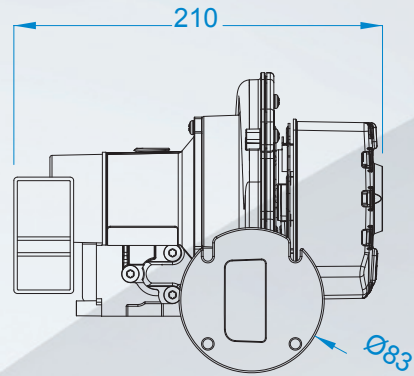
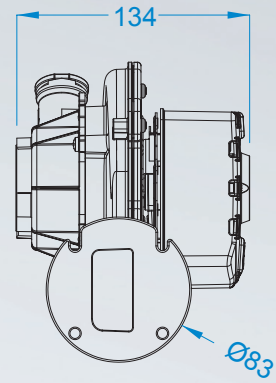
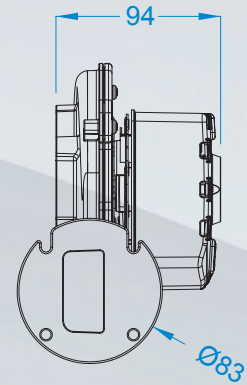
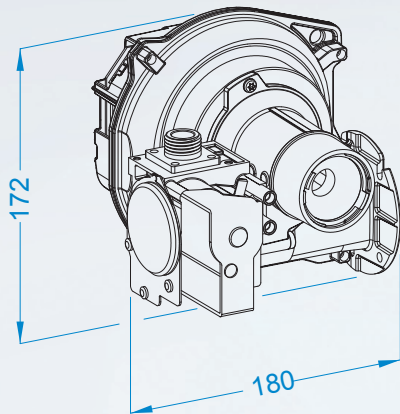
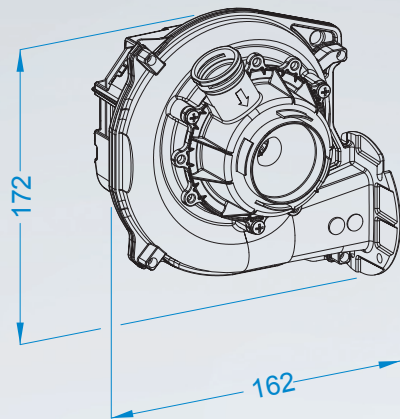
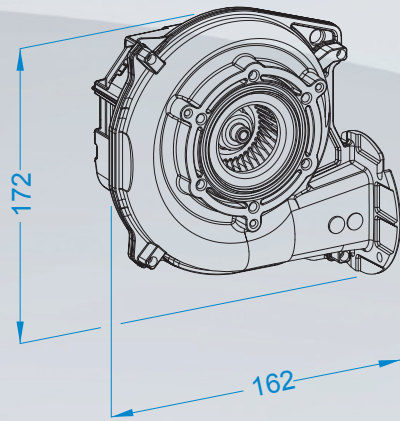
NG30



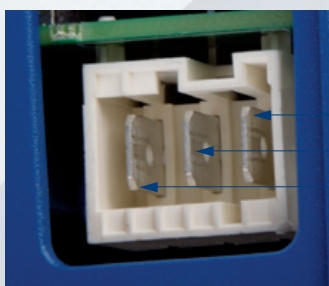
Various sizes of venturi are available (characterized by different colors) to fit the maximum appliance power



## Dimensions in mm

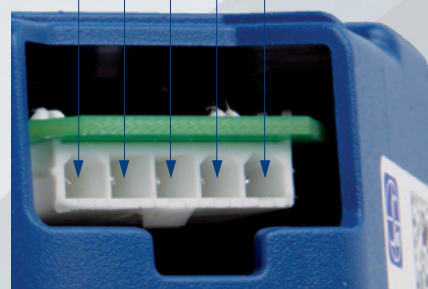


## Connector



fan power supply connector 3644  
03 k01 LUMBERG RAST-5

SUPPLY VOLTAGE +      HALL SENSOR OUT      GND      PWM INPUT      SUPPLY VOLTAGE -



fan driving interface