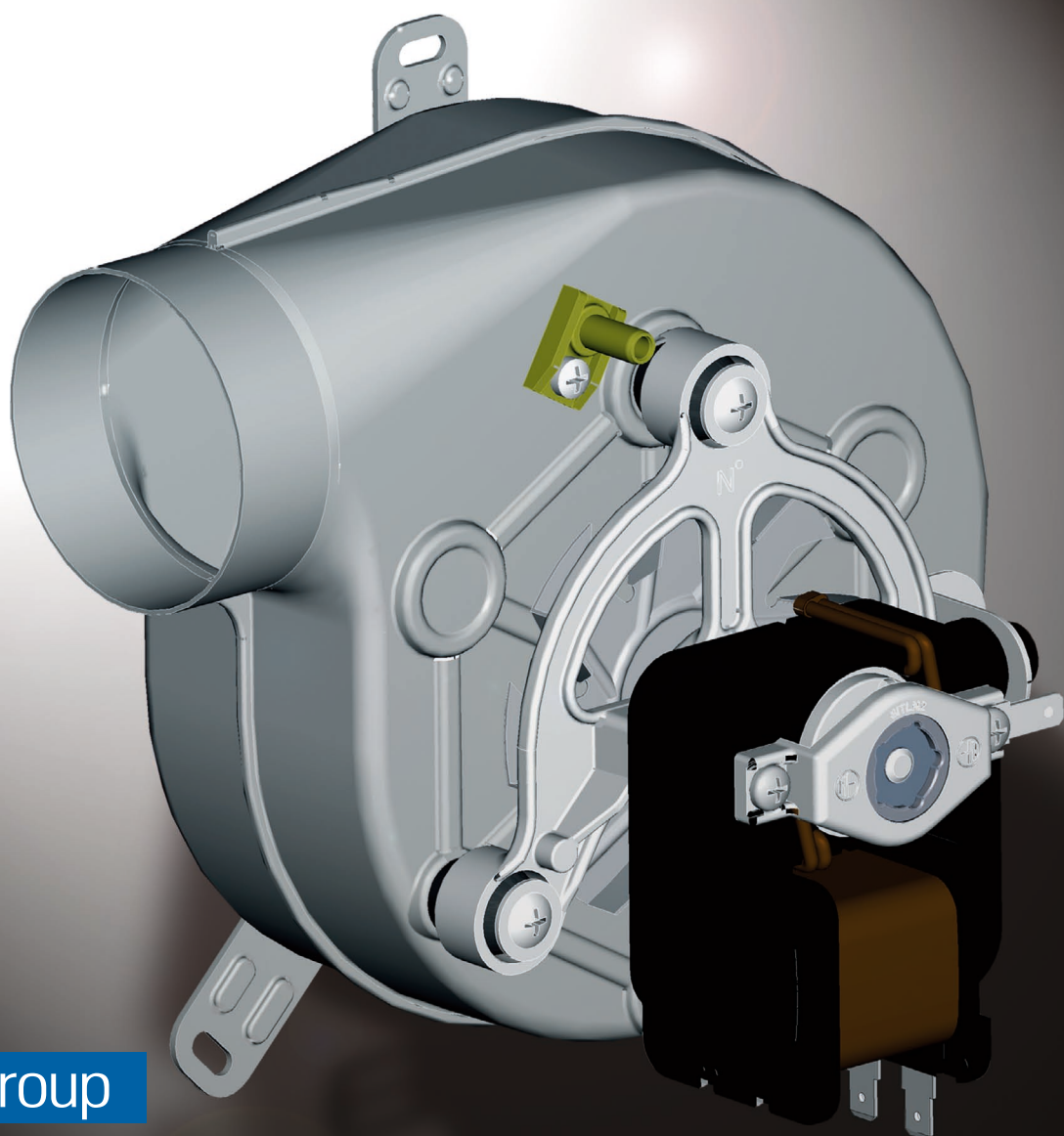


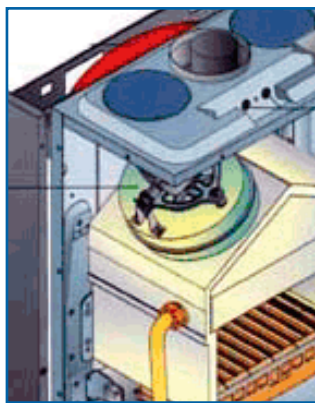
GOLD

Fan for Standard Efficiency Boilers



SITGroup

SIT S.P.A. Via G. Deledda 10/12 - 62010 Montecassiano (MC)
fax +39 0733 598858 phone +39 0733 591411
www.sitgroup.it e-mail: sit.montecassiano@sitgroup.it



- Low Noise
- Hardened stainless steel shaft
- Rust proof protection
- Motor pack made of silicon laminations with minimal loss rate
- Severely reduced power absorption with high performance without any need for specific maintenance
- Output shaft supported by two oscillating ball bearings that are shielded and lubricated with special high temperature grease
- Vibration-damping system
- Patented coupling system inside boiler
- Possible either vertical or horizontal work
- all classes can be supplied according to the EN 60335-1 / IEC 342-1 prescriptions (on request)
- aluminum plated scroll

Main features:

- Shaded poles motor with die-cast rotor
- High efficiency

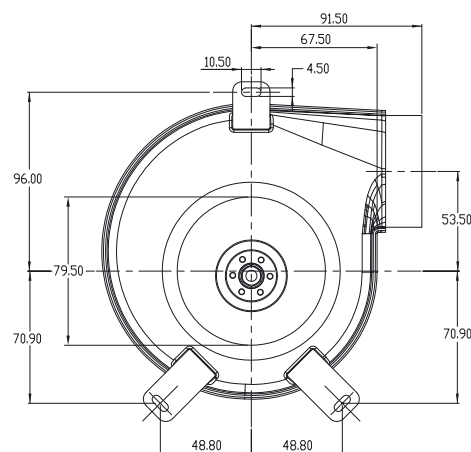
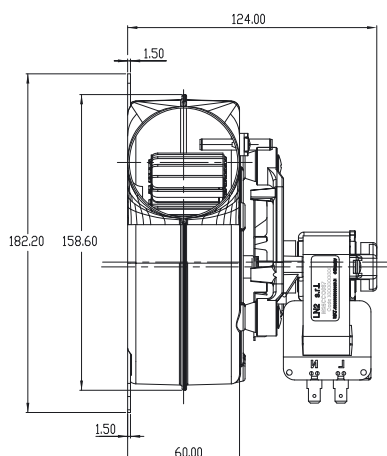
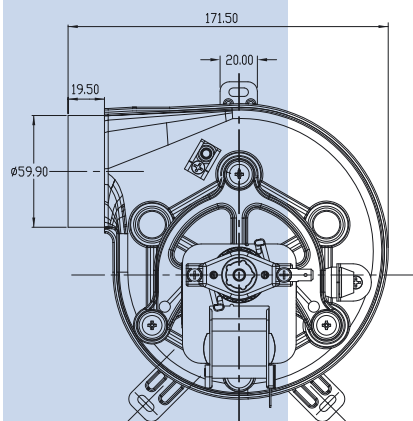
OUTPUT CURVE

Y-axis: [Pa] (0 to 320)
X-axis: [Nm³/h] (0 to 112)

Legend:

- 40 W (Green line with diamond markers)
- 33 W (Red line with square markers)
- 30 W (Blue line with circle markers)

Output Flow [Nm³/h]	40 W Output Pressure [Pa]	33 W Output Pressure [Pa]	30 W Output Pressure [Pa]
0	280	270	210
4	280	265	205
8	275	260	200
12	270	255	195
16	265	250	190
20	260	245	185
24	255	235	175
28	250	225	165
32	245	215	155
36	240	205	145
40	235	195	135
44	225	185	125
48	215	175	115
52	205	165	105
56	195	155	95
60	185	145	85
64	175	135	75
68	165	125	65
72	155	115	55
76	145	105	45
80	135	95	35
84	125	85	25
88	115	75	15
92	105	65	5
96	95	55	0
100	85	45	-5
104	75	35	-10
108	65	25	-15
112	55	15	-20



Available on request:

- o Speed sensor
- o Custom outlet length

Reference standard:
- EN60335-1

	30W	33W	40W
Voltage	230V	230V	230V
Frequency	50Hz	50Hz	50Hz
Nominal power consumption	30W	33W	40W
Max. Air flow	76 m3/h	86 m3/h	97 m3/h
Max. Noise (sound pressure level)*	40 dB(A)	44.9 dB(A)	44.9 dB(A)
Insulation class	H	H	H
Thermal protection	Protected impedance	Protected impedance	Protected impedance
Probe material	Ryton	Ryton	Ryton
Housing material	Aluminized steel	Aluminized steel	Aluminized steel
Impeller material	Aluminium	Aluminium	Aluminium

* measured inside a semi-anechoic chamber, motor-side, at a distance of 1m.